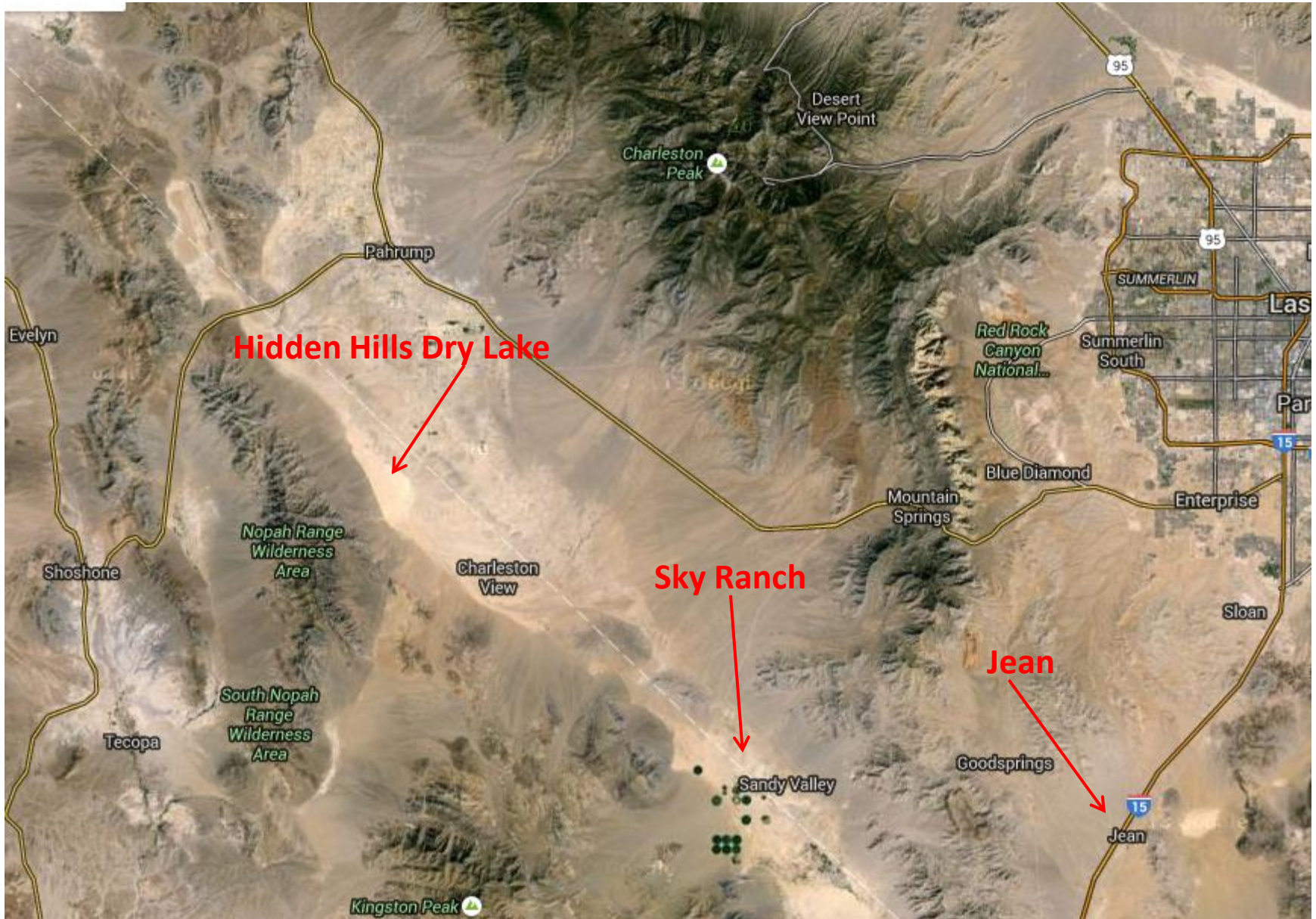


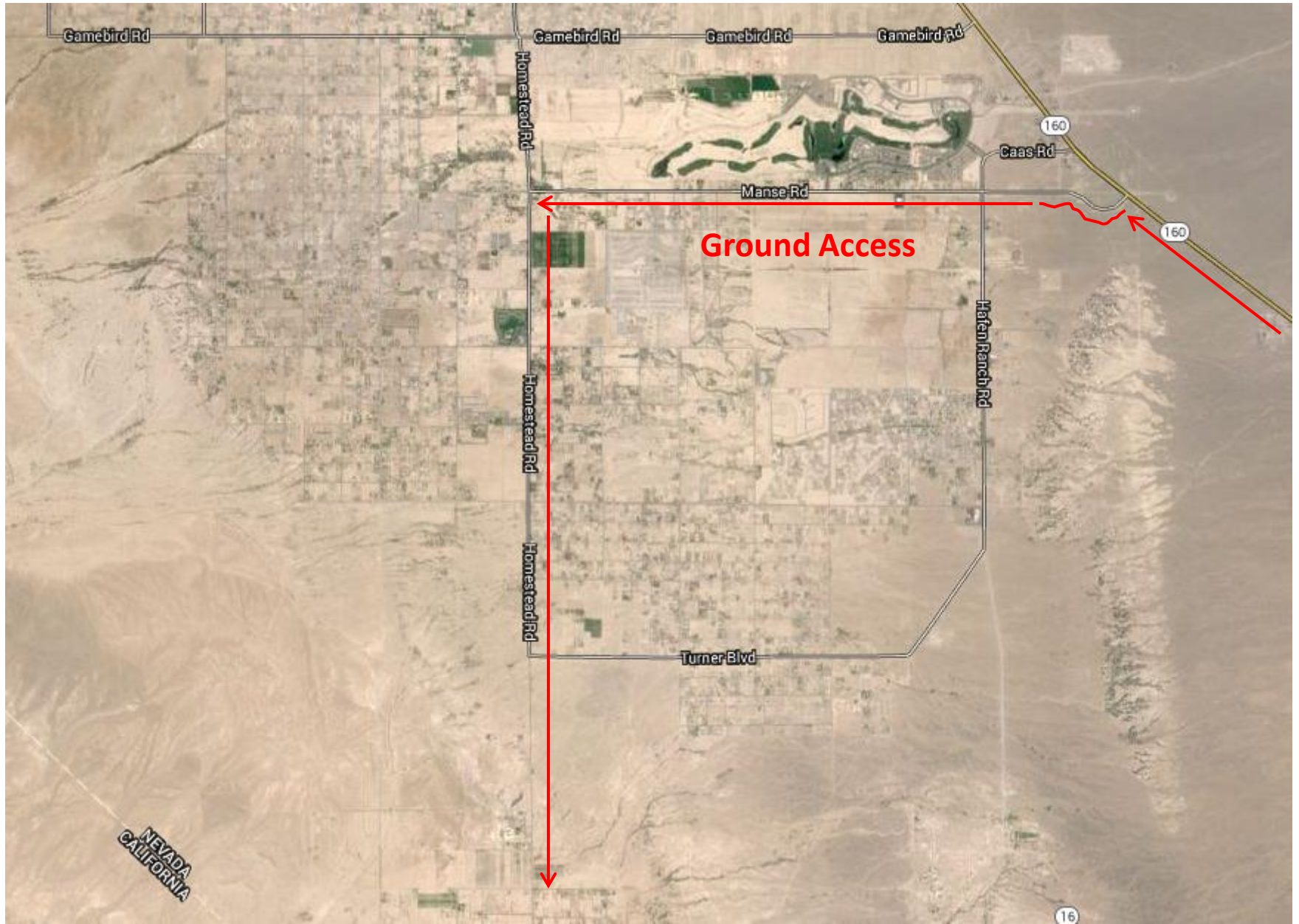
Hidden Hills Dry Lake

- N36 02.846 W115 59.265
- Field Elevation: 2523 ft
- Rwy: Any
 - Long Axis: 13/31
 - Coordinates are close to ground retrieve entry point
 - Some obstacles may exist, but lake bed surface should be suitable for landing anywhere
- Aero Retrieve: Yes
 - \$100 Minimum from Jean
 - Minimum ETA: End of Day
- Ground Retrieve: Yes
 - Minimum ETA: 1.5 hours From Jean
 - Ground retrieve crews: Mark your entry point onto the lake with GPS or other visible marker or it may be difficult to find your way out.
- Use Caution: Lake does get used by ATV's etc.

Hidden Hills Dry Lake



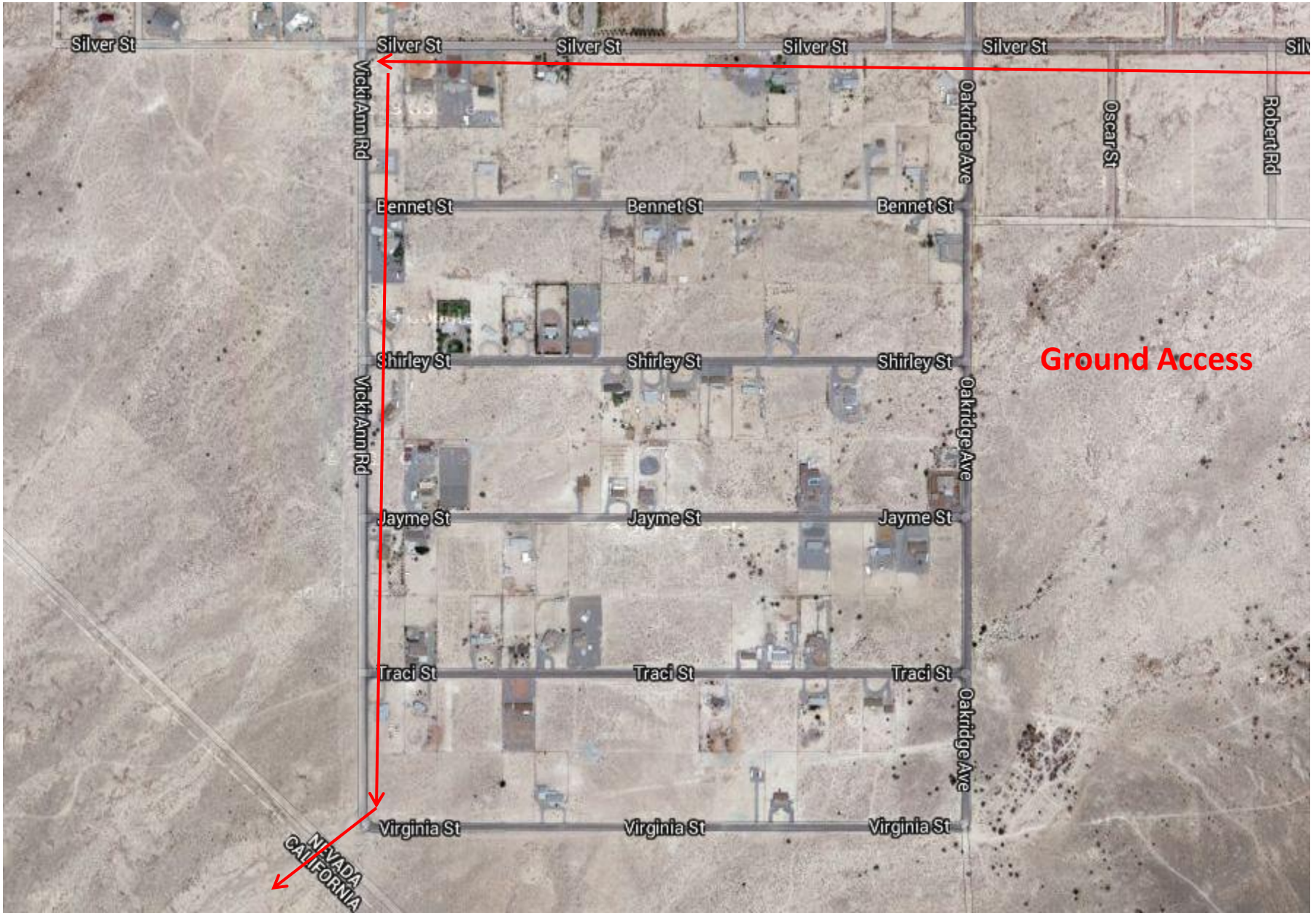
Hidden Hills Dry Lake



Hidden Hills Dry Lake



Hidden Hills Dry Lake



Hidden Hills Dry Lake



Hidden Hills Dry Lake

