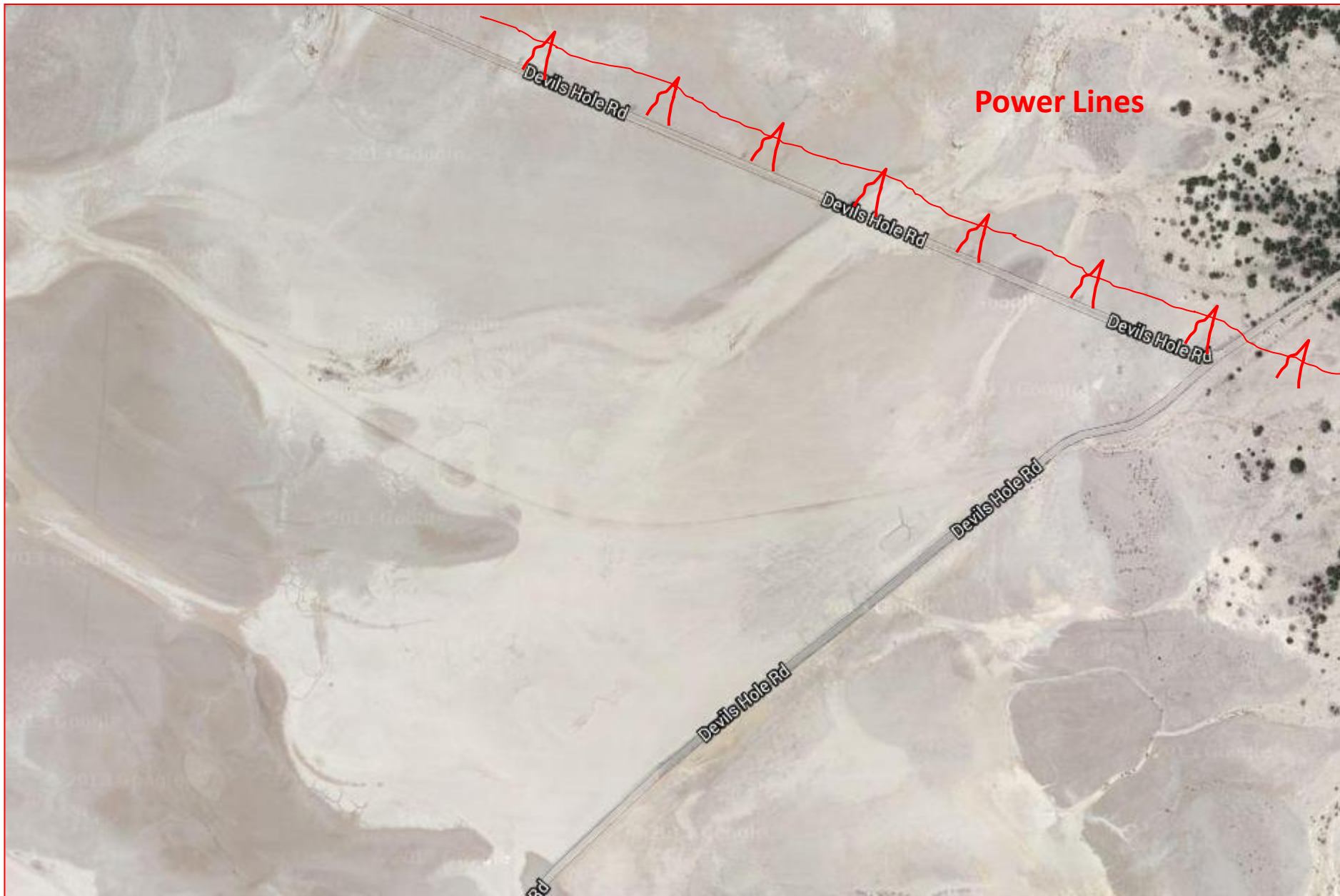


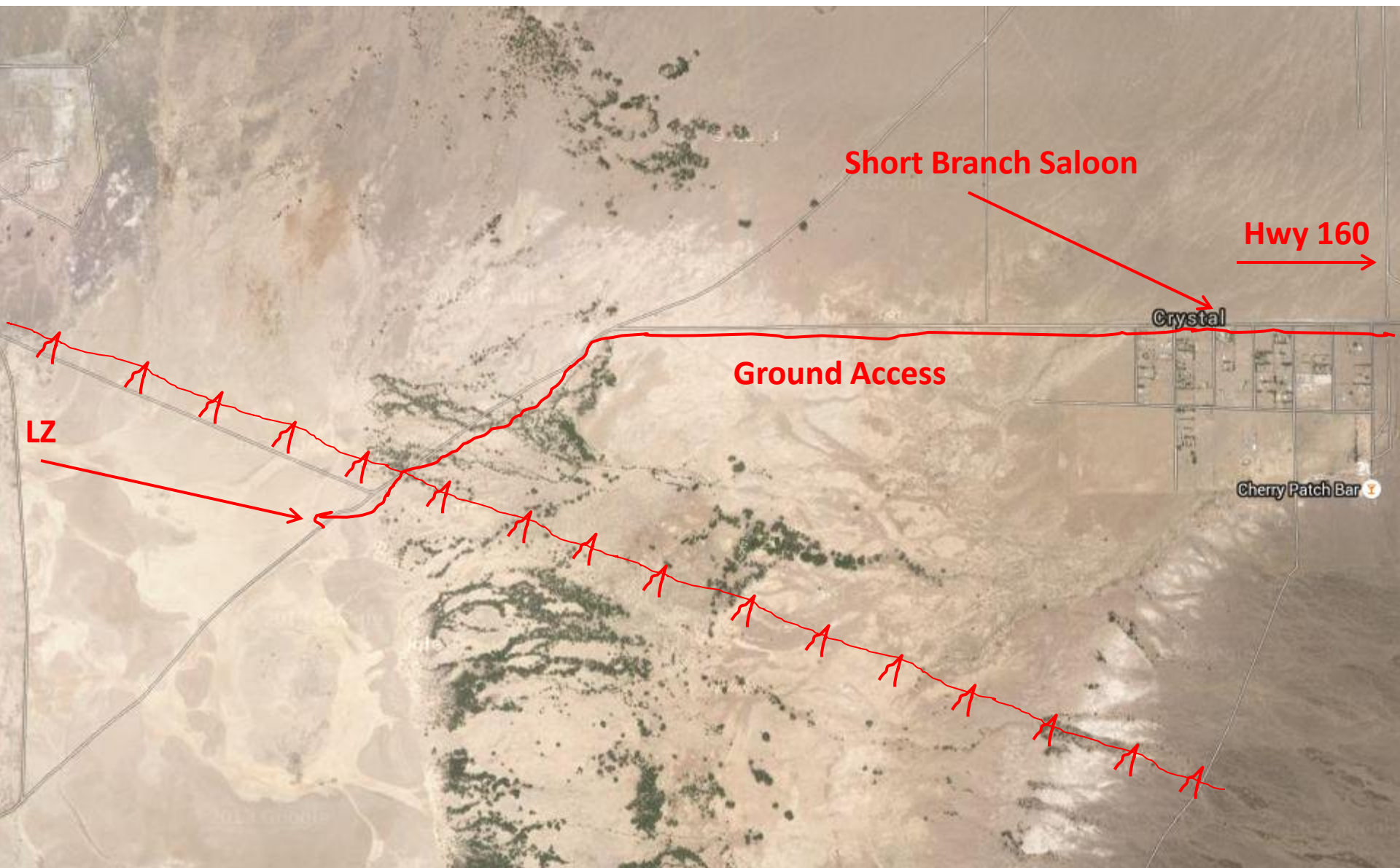
Cherry Patch

- N36 28.924 W116 13.251
- Field Elevation: 2326 ft
- Rwy: Any (**Caution for Pwr Lines Running Through the Lake Bed**)
 - Land to These Coordinates: Shorter Walk to the Cover of Foliage or Crystal. 3.3 Mile Walk East to the Short Branch Saloon
 - LZ is Generally Clear but Obstacles Do Exist
- Aero Retrieve: Yes
 - \$200 Minimum from Jean
 - Minimum ETA: End of Day
- Ground Retrieve: Yes
 - Minimum ETA: 2 hours From Jean
- 13 NM NE of Cherry Patch is **Desert Rock**. Great Runway. Use It If You Need It. DOE Runway. If You Land There, Expect to Become Intimate With the Tarmac.

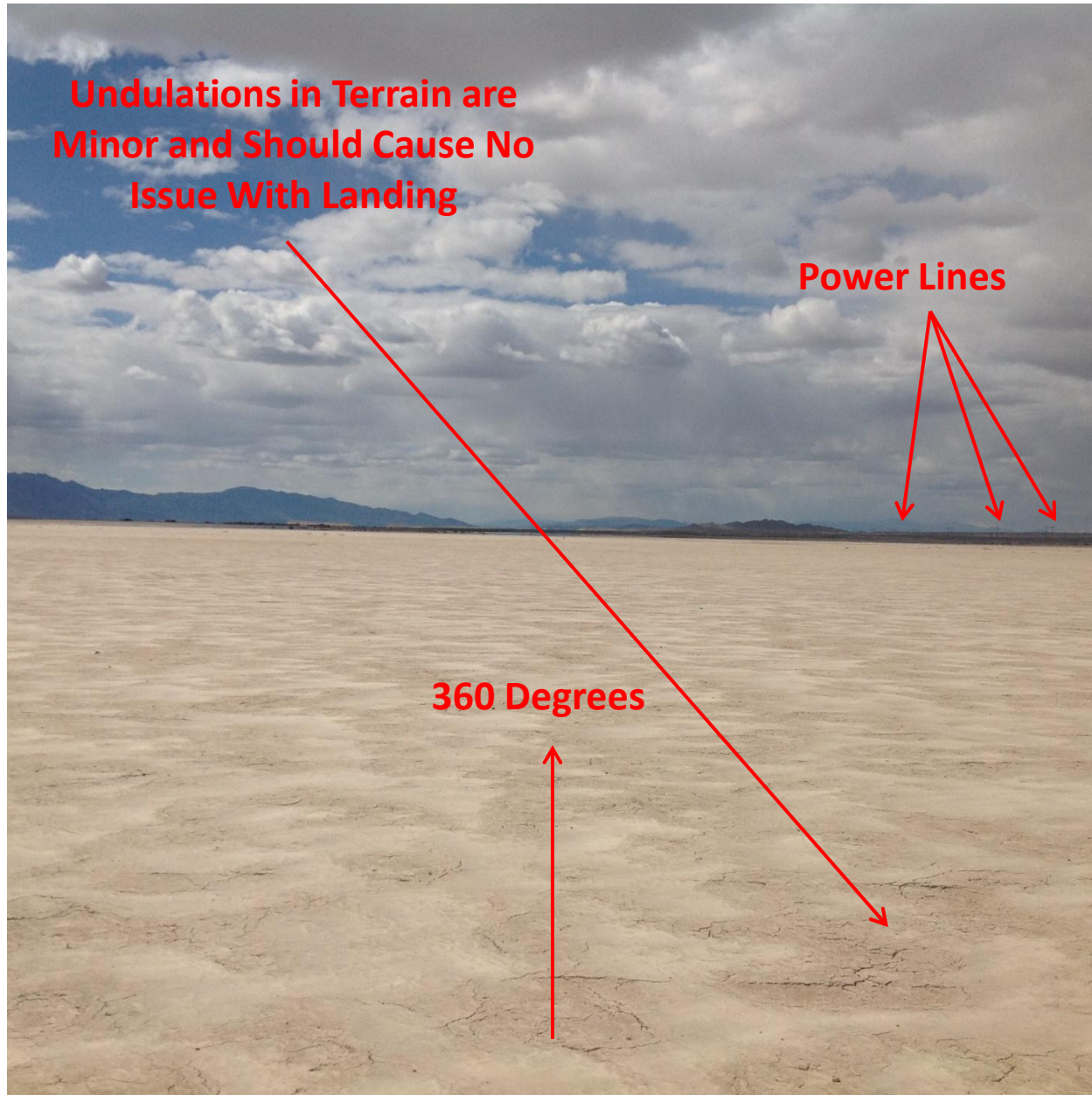
Cherry Patch



Cherry Patch



Cherry Patch



Cherry Patch VFR Sectional

