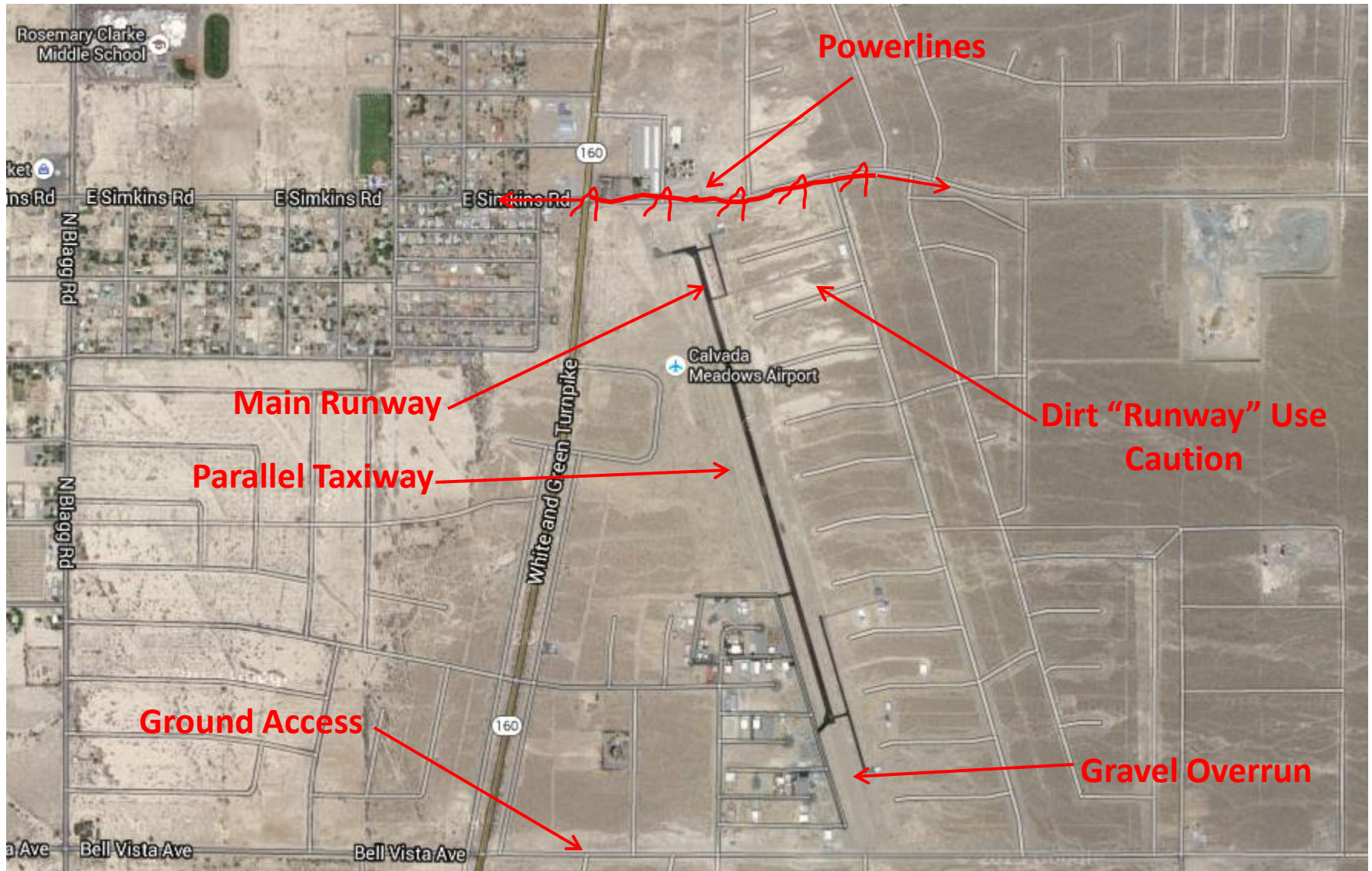


# Calvada Meadows

- N36 16.260 W115 59.700
- Field Elevation: 2726 ft
- Rwy: 15/33, 4000 ft x 48 ft
  - Runway Edge Lights are about 2 feet tall on the main runway.
  - The paved taxiway to the SE of the RWY is available and has no marking lights.
  - Dirt runway east of main runway appears usable for glider use. Use caution for uneven terrain
  - Paved parallel taxiway appears landable for gliders
  - Gravel overrun may be usable. Check for obstacles before landing. Tall runway lights abut the runway and overrun.
  - Uphill heading 150 degrees
  - Use caution for 35 ft powerlines NW of the field
- Aero Retrieve: Yes
  - Listed as Private strip but Club members have one owner's permission to operate gliders or tow planes from the strip
  - \$120 Minimum from Jean
  - Minimum ETA: End of Day
- Ground Retrieve: Yes
  - Minimum ETA: 1.5 hours From Jean

# Calvada Meadows

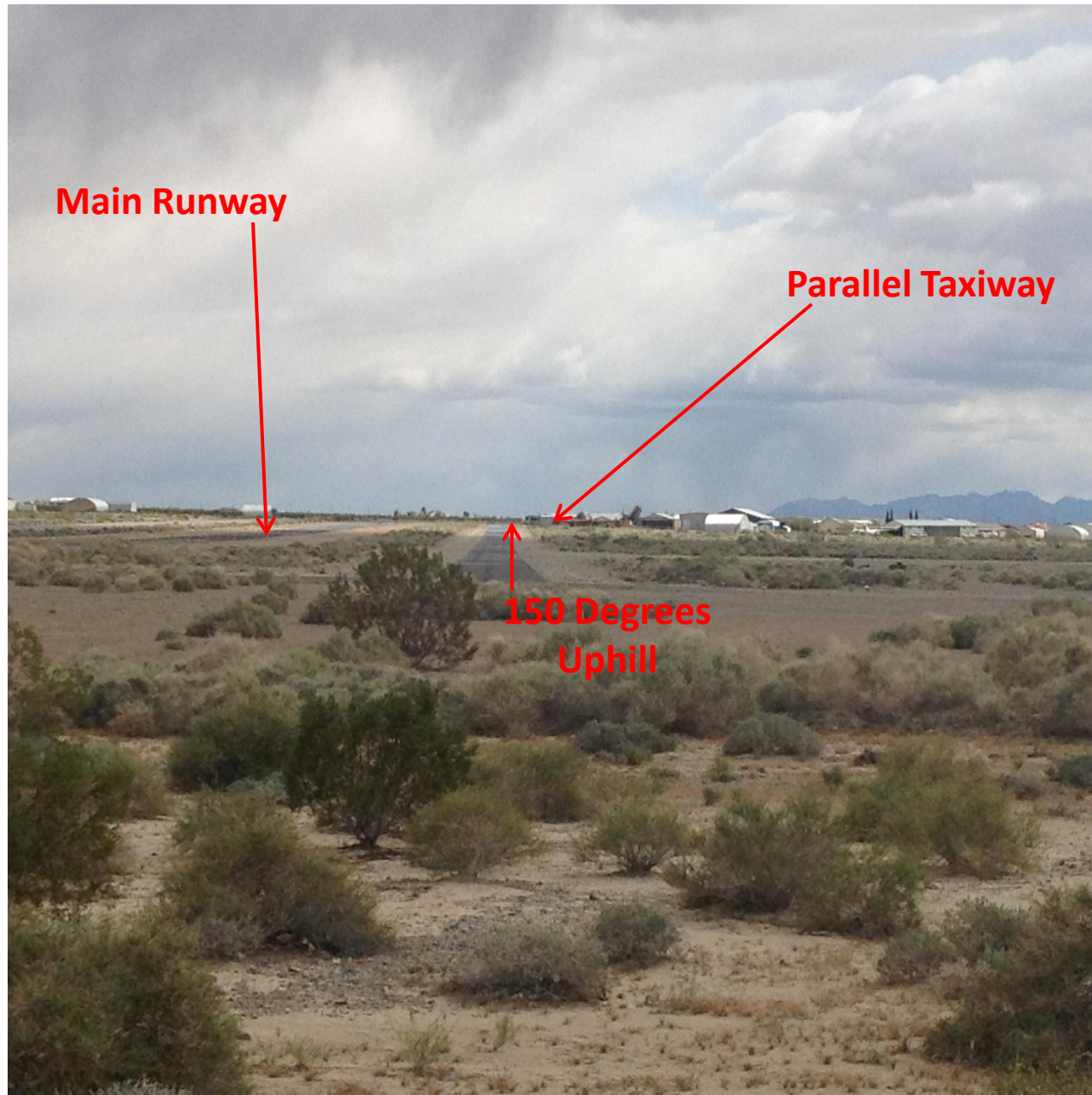


## Calvada Meadows





## Calvada Meadows





Paved taxiway  
landable and  
useable for  
gliders and tow  
planes

1590 ft



# Calvada Meadows

