

# Airport Facilities Directory

**SKY RANCH** (3L2) 2 SW UTC-8(-7DT) N35°47.58' W115°37.59'

**LAS VEGAS**

2599 NOTAM FILE RNO

**L-7D**

**RWY 03-21:** H3340X45 (ASPH) RWY LGTS(NSTD)

**RWY 03:** Rgt tfc.

**RWY 21:** Thld dsplcd 180'. Road.

**RWY 12-30:** 3300X105 (DIRT) ← **Best for gliders due to rwy lights on 03/21**

**RWY 12:** Rgt tfc.

**SERVICE:** LGT Rwy 03-21 rwy lgts NSTD. Rwy 03-21 thld lgts only.

**AIRPORT REMARKS:** Attended irregularly. Low flying military acft in area. Ultralight activity on and invof arpt. Occasional livestock on and in vicinity of acft movement areas. Rwy 03-21 obstacle free area ltd to 96' either side of centerline. Unmarked and unlighted power poles/lines NW/SE of Rwy 03-21. No line of sight between rwy ends. Arpt is a residential airpark, auto tfc is on and across rwys and twys. Avoid noise sensitive residential area 1.5 miles NW of arpt. Rwy 21 dsplcd thld marked with 8' white lines. Rwy edges marked with reflectors. Rwy 12-30 thld not marked.

**AIRPORT MANAGER:** 702-723-5123

**COMMUNICATIONS:** CTAF/UNICOM 123.0

**RADIO AIDS TO NAVIGATION:** NOTAM FILE LAS.

**LAS VEGAS (H) VORTACW** 116.9 LAS Chan 116 N36°04.78' W115°09.59' 218° 28.5 NM to fld. 2136/15E.

No NOTAM MP: 1600-1800Z† Sat

VORTAC unusable:

025°-160° byd 20 NM blo 6,000'

160°-200° byd 20 NM blo 9,000'

200°-025° byd 25 NM blo 11,000'

200°-220° byd 15 NM blo 9,000'

220°-245° byd 35 NM blo 15,000'

245°-260° byd 35 NM blo 14,000'

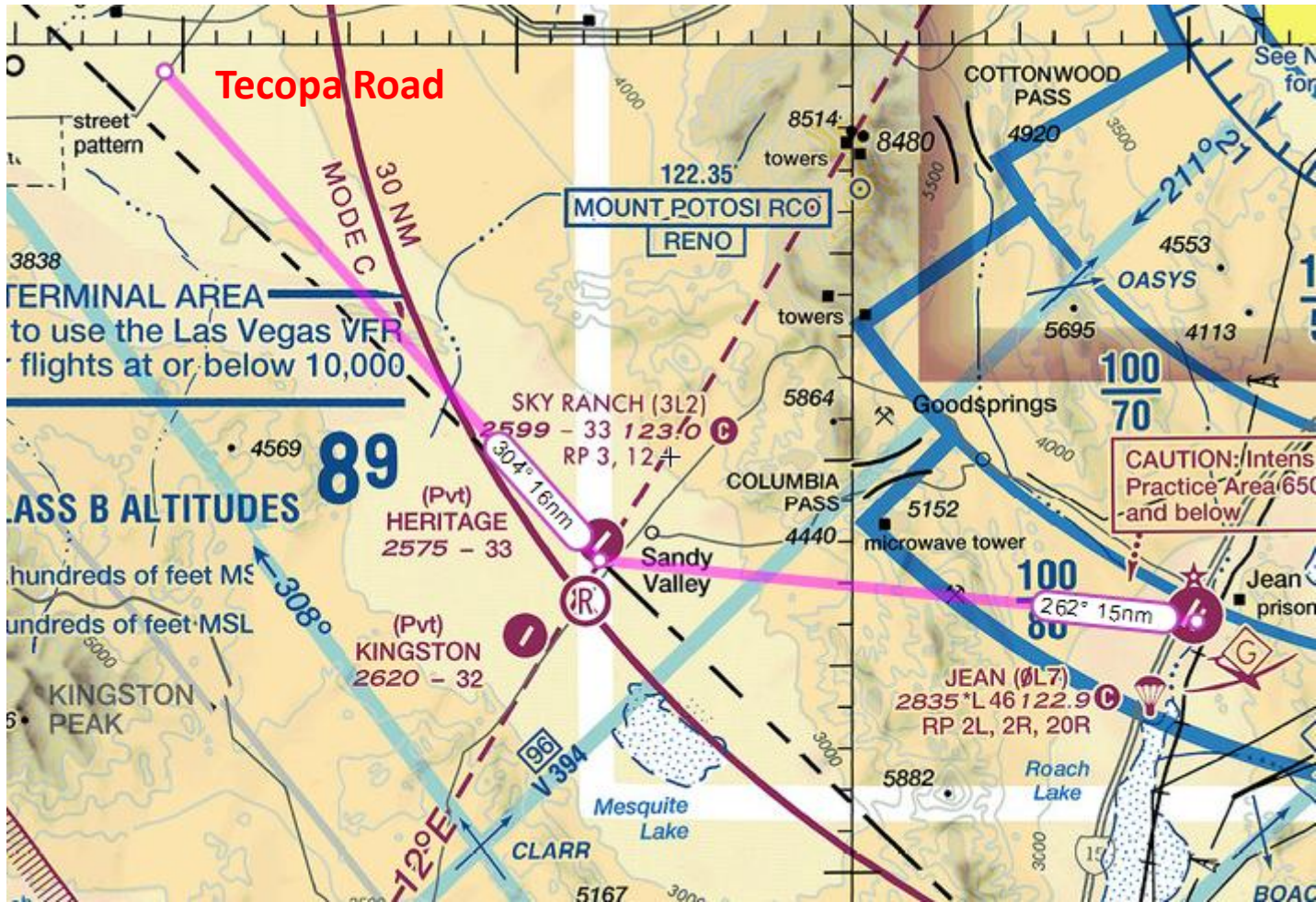
260°-275° byd 35 NM blo 14,000'

275°-310° byd 35 NM blo 16,500'

# Satellite Image



# VFR Sectional



Next land out site NW bound is Tecopa Rd